

# CANON INFORMATION & IMAGING SOLUTIONS

## Accounts Payable Automation Solution Validated Integration with JD Edwards EnterpriseOne 9.2



CANON INFORMATION & IMAGING SOLUTIONS

One Canon Park  
Melville, NY 11747  
Tel.: +1.631.330.5000  
[ciis.canon.com](http://ciis.canon.com)



### **Validated Integration**

JD Edwards  
EnterpriseOne

Oracle Validated Integration provides customers with confidence that a partner's integration with an Oracle on-premises application is functionally sound and performs as designed. This can help customers reduce deployment risk, lower total cost of ownership, and improve the user experience related to the partner's integrated offering.

**Canon Information & Imaging Solutions (CIIS) Accounts Payable (AP) Automation Solution is the perfect match for your deployment of Oracle's JD Edwards EnterpriseOne.**

The integration between CIIS AP Automation Solution and JD Edwards EnterpriseOne reduces processing time and costs, increases user productivity, and strengthens visibility and controls.

### Company Overview

CIIS, a wholly owned subsidiary of Canon U.S.A., Inc., was formed to bring together Canon's greatest intangible assets: information management expertise and imaging technologies. Utilizing Canon's vast collection of imaging technology and development tools along with select third-party enterprise applications, CIIS delivers compelling market-driven services and solutions in the areas of business process automation, procure-to-pay and AP automation, order-to-cash automation, order management automation, and more.

### Integration Overview

The CIIS AP Automation Solution for JD Edwards EnterpriseOne 9.2 combines Canon's imaging expertise with Oracle's enterprise application integration architecture into a single solution to provide a seamless integration with JD Edwards EnterpriseOne.

AP invoice processing (procure-to-pay) is automated by integrating information extracted from the invoice with JD Edwards EnterpriseOne 9.2 master data with purchase order details. The solution provides robust data extraction, intelligent document recognition, and validation capabilities. Data extracted from an invoice is used to create a JD Edwards EnterpriseOne voucher transaction. As a result, the procure-to-pay process is much faster and more efficient, and the information is visible to business users across departments.

### Integration Details

The CIIS AP Automation Solution captures all the relevant information from the invoice header in addition to line item information. This information is validated against JD Edwards EnterpriseOne master data to improve data accuracy. If required, the extracted information can also be verified against invoice image.

Once the invoice information is extracted and verified, the data—such as invoice date, company code, supplier code, invoice number and gross amount—is exchanged with JD Edwards EnterpriseOne through web services.

**AVAILABILITY**

Canon Information & Imaging Solutions  
 One Canon Park  
 Melville, NY 11747  
 Tel.: +1.631.330.5000  
[ciis.canon.com](http://ciis.canon.com)

The services enabled include the following:

- Validation against JD Edwards EnterpriseOne master data.
- Non-purchase order (PO) voucher creation.
- PO-matched voucher creation.
- From a voucher view in JD Edwards EnterpriseOne, CafeOne is used to view the related invoice image or related content and enables collaboration. (See figure 1.)

**SUPPORT**

For more information, visit our knowledge center and technical support center: [ciis.secure.force.com](http://ciis.secure.force.com)

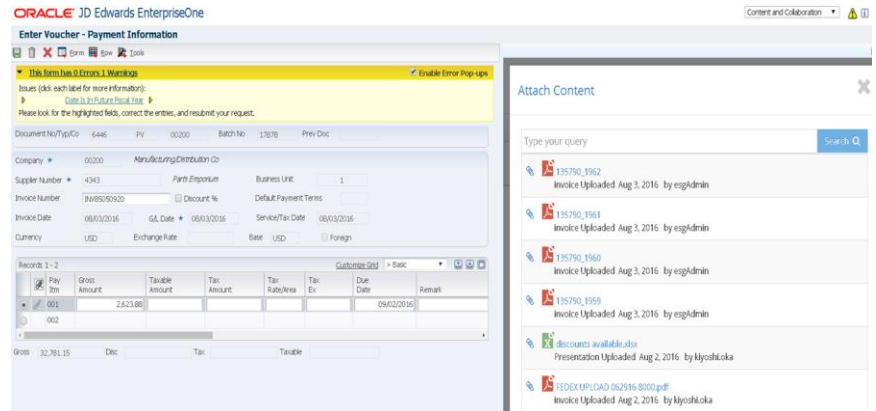


Figure 1. The CIIS AP Automation Solution enables direct access to document management functions from the familiar JD Edwards EnterpriseOne user interface, thereby enhancing information visibility and collaboration.

**Environment**

CIIS Environment	Oracle Environment
<ul style="list-style-type: none"> <li>• AP Automation Solution (EIP V1.3E)</li> <li>• Oracle Database 12c</li> <li>• Oracle WebLogic Server 12c</li> </ul>	<ul style="list-style-type: none"> <li>• Oracle's JD Edwards EnterpriseOne 9.2</li> <li>• Oracle Database 12c</li> <li>• Oracle WebLogic Server 12c</li> </ul>